

# REACH

Juvenile Service Planning  
Committee (JSPC) +  
Interagency Oversight  
Group (IOG)



Pathways program of Joint Initiatives for Youth + Families



# Agenda

## REACH Committee Meeting

Thursday, April 11th | 11:45 am – 1:15 pm

### HIGHLIGHTS:

- Introductions/Ice Breaker
- Approve February Minutes – Vote
- CMP Budget – Vote
- Joint Initiatives Re-Organization
- Chair Position FY24-25 - Bylaws

### AGENDA MATERIALS:

- Monthly Presentation with Agenda
- Previous month's meeting minutes

**Welcome**  
**5-10 minutes**

Please put your  
name/organization in the  
chat!

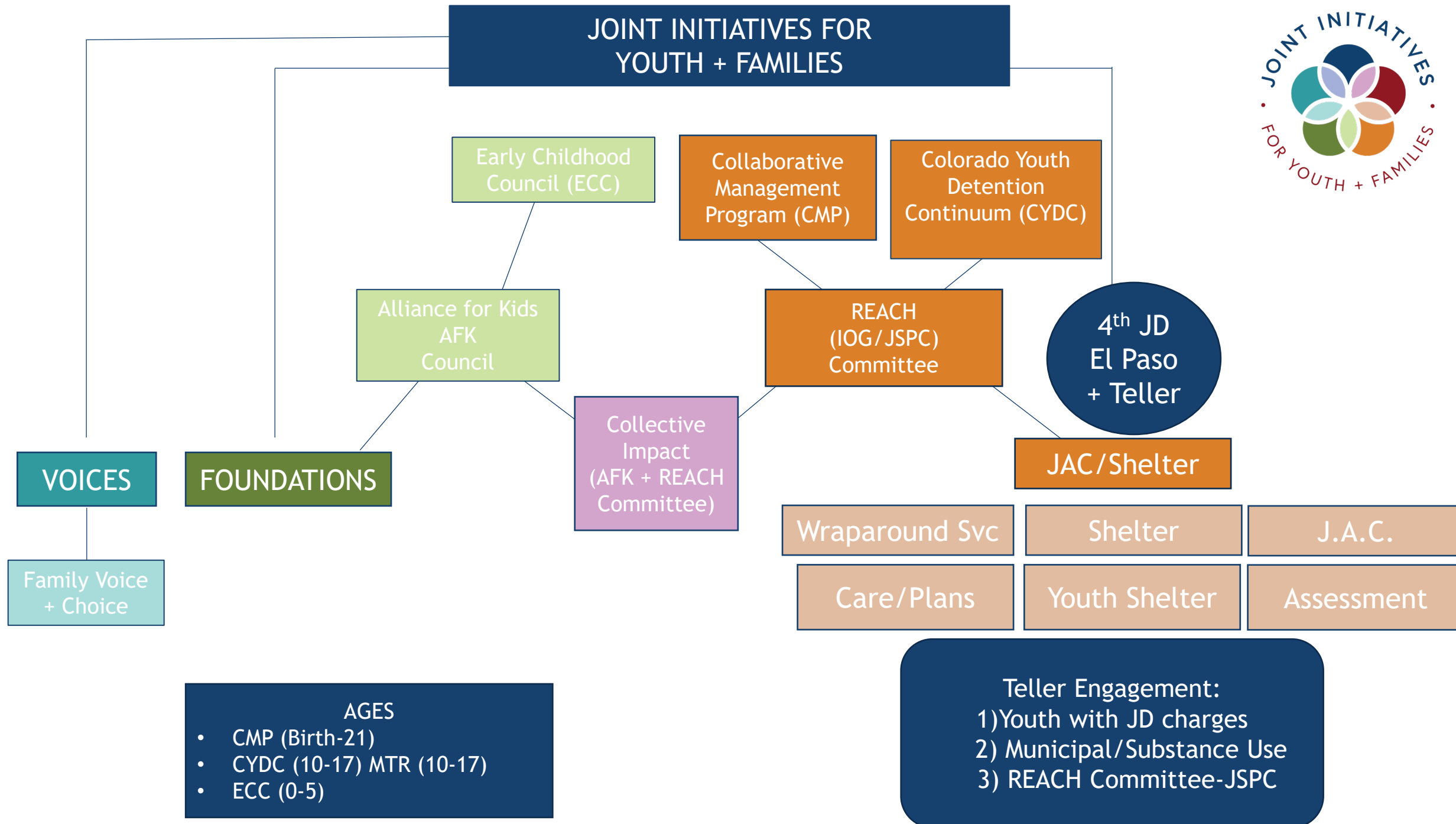
**4<sup>th</sup> Judicial District**  
**(CYDC/JSPC)**

**&**

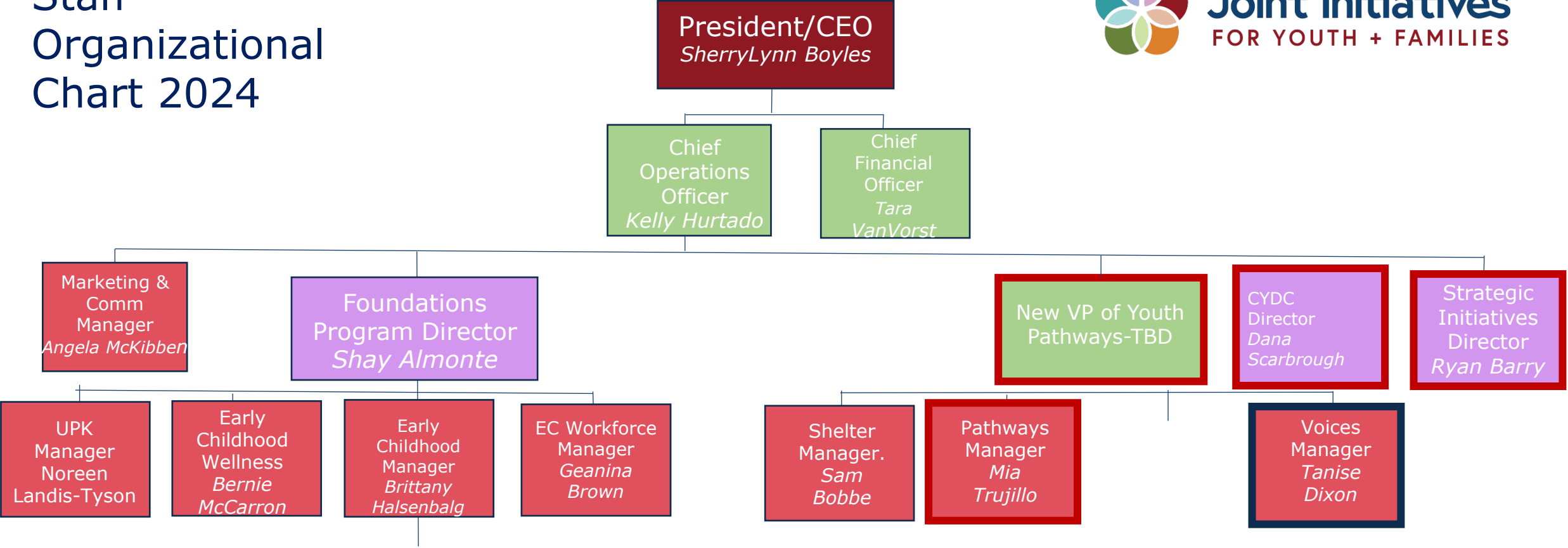
**El Paso County**  
**(CMP/IOG)**

**=**

**REACH**



# Staff Organizational Chart 2024



# REACH Executive Team



Chair	Jennifer Hernandez – Juvenile Probation vote
Vice-Chair	Tina Horton – 4 <sup>th</sup> Judicial District
Past IOG Chair	Catania Jones – Director CY&FS
Past JSPC Chair	Andrew Prehm – Bureau Chief Sheriff's Office
Judge/Magistrate	Gail Warkentin – Magistrate
At-Large Member	Angela Rose – CASA Executive Director
At-Large Member	Maria Black – Special Education D-11
Joint Initiatives Member	SherryLynn Boyles – President/CEO JI
DYS Representative	SRO Director/Interim Kelly Crittenden, Program & Client Manger
Private Citizen	FY24-25 Open, one candidate potential

**Interested in joining the team for FY24-25?**  
**Contact: Jennifer Hernandez or Tina Horton.**

# CMP Updates

## LEGISLATION: HB1249

Data reporting ISSTs

ETO & Trails

No longer Incentive funds, Need based

Funding Formula Rule Change – draft only

**El Paso County  
(CMP)**

### **FY23-24 MOU Partners**

- **EPC DHS**
- **4<sup>th</sup> JD Probation**
- **4<sup>th</sup> JD District Court**
- **EPC Health Department**
- **District 11**
- **Diversus Health Mental Health**
- **CCHA**
- **DYS**
- **Diversus Health Alcohol & Drug Treatment**
- **TESSA**
- **CASA**
- **Joint Initiatives**
- **Family Member – Sandra Kwesell**

# Questions?



Collaborative Management Program (CMP) & Colorado Youth Detention Continuum (CYDC) is part of Pathways program of Joint Initiatives for Youth + Families

