

July 2022 FY 2022-2023 CYDC JDSAG SUPPLEMENTAL REPORT

Prepared by the Division of Youth Services (DYS)
Data Management & Analysis
September 1



COLORADO
Division of Youth Services
Office of Children, Youth & Families

July 2022 CYDC Supplemental Report

DYS Commitment ADP & New Commitments by Judicial District

Region	JD ¹	2023 Population Estimates ²	ADP ³		New Commitments		
			July 2022	YTD	July 2022	YTD	YTD Rate ⁴
<i>Central Region</i>							
	1st	53,137	19.9	19.9	2	2	0.4
	2nd	55,643	54.4	54.4	1	1	0.2
	5th	8,633	2.0	2.0	0	0	0.0
	18th	110,220	44.8	44.8	1	1	0.1
Central Total		227,633	121.1	121.1	4	4	0.2
<i>Northeast Region</i>							
	8th	35,606	17.7	17.7	1	1	0.3
	13th	8,394	1.0	1.0	0	0	0.0
	17th	67,324	23.3	23.3	4	4	0.6
	19th	39,451	18.0	18.0	1	1	0.3
	20th	29,389	6.0	6.0	0	0	0.0
Northeast Total		180,164	66.0	66.0	6	6	0.3
<i>Southern Region</i>							
	3rd	1,866	2.7	2.7	1	1	5.4
	4th	83,031	35.8	35.8	2	2	0.2
	10th	17,262	9.6	9.6	1	1	0.6
	11th	7,001	2.0	2.0	0	0	0.0
	12th	5,239	3.0	3.0	0	0	0.0
	15th	2,142	0.0	0.0	0	0	0.0
	16th	2,796	1.3	1.3	0	0	0.0
Southern Total		119,337	54.3	54.3	4	4	0.3
<i>Western Region</i>							
	6th	6,875	1.0	1.0	0	0	0.0
	7th	10,293	6.6	6.6	0	0	0.0
	9th	8,326	0.0	0.0	0	0	0.0
	14th	5,536	0.0	0.0	0	0	0.0
	21st	16,327	17.4	17.4	2	2	1.2
	22nd	2,894	1.0	1.0	0	0	0.0
Western Total		50,251	26.0	26.0	2	2	0.4
Statewide Total		577,385	267.4	267.4	16	16	0.3

¹ JD represents the judicial district in which the client was committed. Regional totals are a sum of their respective judicial districts. Regional totals reported here may differ slightly from those reported in the Monthly Population Report, where region is defined by active caseloads.

² Source: DOLA 2023 Estimates

³ Due to rounding, totals shown may not be an exact sum of the subtotals.

⁴ Per 10,000 youth in the population

July 2022 CYDC Supplemental Report

DYS Detention ADP and New Detention Admissions by Judicial District

Region	JD	2023 Population Estimates ¹	ADP		New Admits		YTD New Admit Rate ²
			July 2022	YTD	July 2022	YTD	
<i>Central Region</i>							
	1st	53,137	10.2	10.2	25	25	4.7
	2nd	55,643	26.8	26.8	35	35	6.3
	5th	8,633	0.4	0.4	2	2	2.3
	18th	110,220	33.5	33.5	41	41	3.7
Central Total		227,633	70.9	70.9	103	103	4.5
<i>Northeast Region</i>							
	8th	35,606	4.4	4.4	6	6	1.7
	13th	8,394	4.2	4.2	3	3	3.6
	17th	67,324	15.7	15.7	13	13	1.9
	19th	39,451	5.3	5.3	16	16	4.1
	20th	29,389	2.6	2.6	7	7	2.4
Northeast Total		180,164	32.2	32.2	45	45	2.5
<i>Southern Region</i>							
	3rd	1,866	0.5	0.5	1	1	5.4
	4th	83,031	34.0	34.0	31	31	3.7
	10th	17,262	6.5	6.5	12	12	7.0
	11th	7,001	0.0	0.0	0	0	0.0
	12th	5,239	0.0	0.0	0	0	0.0
	15th	2,142	0.1	0.1	1	1	4.7
	16th	2,796	0.0	0.0	0	0	0.0
Southern Total		119,337	41.2	41.2	45	45	3.8
<i>Western Region</i>							
	6th	6,875	0.0	0.0	0	0	0.0
	7th	10,293	3.1	3.1	1	1	1.0
	9th	8,326	1.0	1.0	0	0	0.0
	14th	5,536	0.0	0.0	0	0	0.0
	21st	16,327	9.7	9.7	23	23	14.1
	22nd	2,894	0.02	0.02	1	1	3.5
Western Total		50,251	13.9	13.9	25	25	5.0
<i>Missing JD or Multiple JDs</i>			<i>0.4</i>	<i>0.4</i>	<i>0</i>	<i>0</i>	
Statewide Total		577,385	158.7	158.7	218	218	3.8

¹ Source: DOLA 2023 Estimates

² Per 10,000 youth in the population

July 2022

CYDC Supplemental Report

DYS Detention LOS by Judicial District				
Region	JD	YTD Detention Releases	YTD LOS (days)	LOS (days) Compared to State AVG
<i>Central Region</i>				
	1st	21	15.9	-1.5
	2nd	24	21.4	3.96
	5th	1	3.1	-14.4
	18th	42	16.0	-1.5
Central Total		88	17.3	-0.2
<i>Northeast Region</i>				
	8th	8	15.8	-1.7
	13th	6	37.0	19.6
	17th	18	34.1	16.6
	19th	13	8.3	-9.1
	20th	3	5.9	-11.6
Northeast Total		48	22.7	5.2
<i>Southern Region</i>				
	3rd	3	3.5	-14.0
	4th	28	16.4	-1.1
	10th	7	2.7	-14.8
	11th	0	0.0	-17.5
	12th	0	0.0	-17.5
	15th	2	2.1	-15.4
	16th	0	0.0	-17.5
Southern Total		40	12.3	-5.2
<i>Western Region</i>				
	6th	0	0.0	-17.5
	7th	0	0.0	-17.5
	9th	0	0.0	-17.5
	14th	0	0.0	-17.5
	21st	21	6.6	-10.9
	22nd	1	0.0	-17.5
Western Total		22	6.3	-11.2
Statewide Total		198	17.5	-

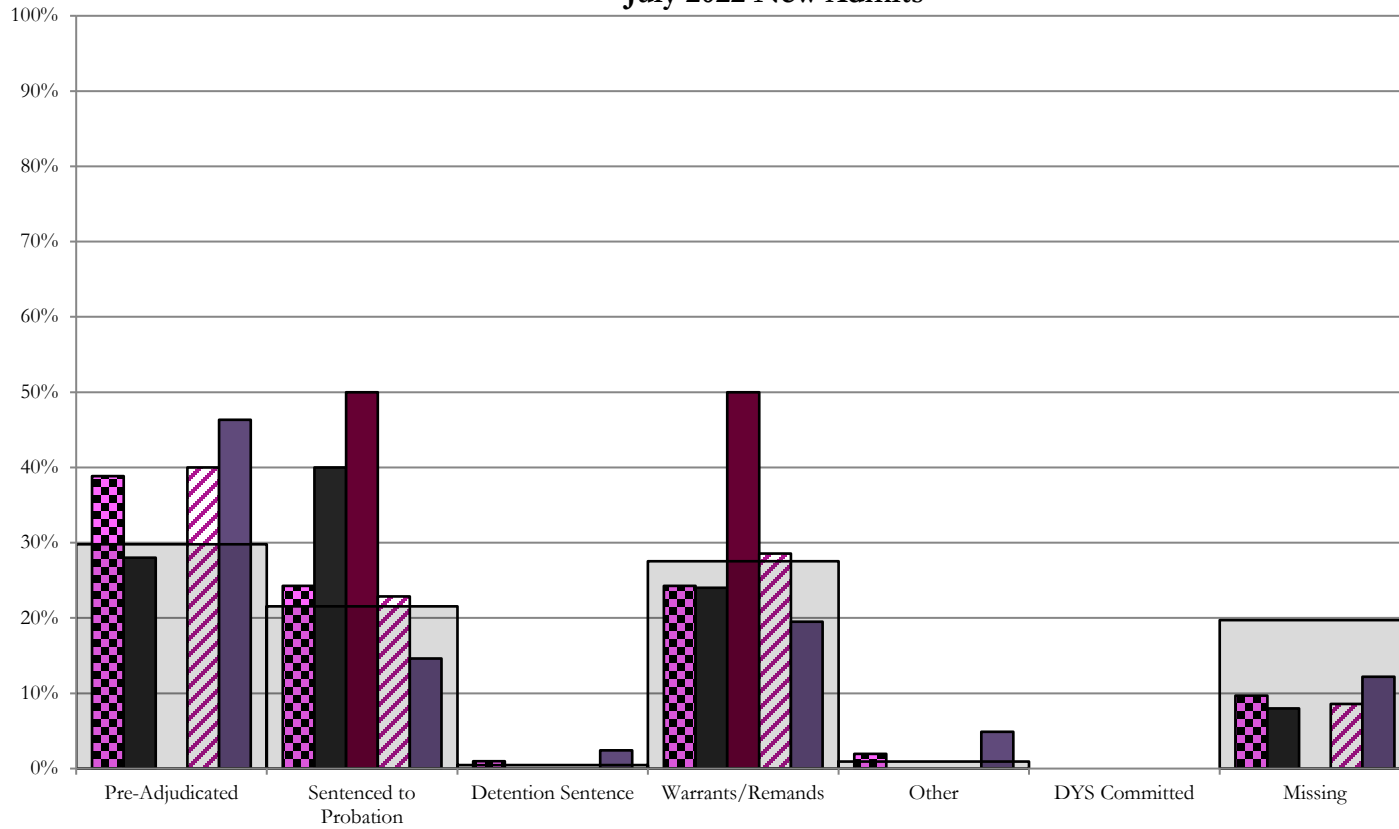
July 2022 CYDC JDSAG Supplemental Report

CYDC Reason Detained (RD) by Judicial District

Region	JD	Monthly New Admits	Pre-Adjudicated				Sentenced to Probation				Detention Sentence								Warrants/Remands				Other								DYS Committed				Missing	
			Felony		Misdemeanor		Technical Violator		New Charges		Probation Sentence		Detention Sentence		Valid Court Order (VCO) Truancy		Awaiting DSS (Social Services) Placement		Failure to Appear (FTA)		Failure to Comply (FTC)		Interstate Compact on Juveniles (ICJ) Hold		Immigration Hold		No Bond Hold		Out-of-Country Warrant		Institutional		Parole		Missing	
			#	%	#	%	#	%	#	%	#	%	#	%	#	%	#	%	#	%	#	%	#	%	#	%	#	%	#	%	#	%	#	%		
<i>Central Region</i>																																				
	1st	25	6	24.0%	1	4.0%	0	0.0%	10	40.0%	0	0.0%	0	0.0%	0	0.0%	0	0.0%	1	4.0%	5	20.0%	0	0.0%	0	0.0%	0	0.0%	0	0.0%	0	0.0%	0	0.0%	2	8.0%
	2nd	35	13	37.1%	1	2.9%	0	0.0%	8	22.9%	0	0.0%	0	0.0%	0	0.0%	0	0.0%	1	2.9%	9	25.7%	0	0.0%	0	0.0%	0	0.0%	0	0.0%	0	0.0%	0	0.0%	3	8.6%
	5th	2	0	0.0%	0	0.0%	0	0.0%	1	50.0%	0	0.0%	0	0.0%	0	0.0%	0	0.0%	0	0.0%	1	50.0%	0	0.0%	0	0.0%	0	0.0%	0	0.0%	0	0.0%	0	0.0%	0	0.0%
	18th	41	14	34.1%	5	12.2%	0	0.0%	6	14.6%	0	0.0%	1	2.4%	0	0.0%	0	0.0%	2	4.9%	6	14.6%	2	4.9%	0	0.0%	0	0.0%	0	0.0%	0	0.0%	0	0.0%	5	12.2%
Central Total		103	33	32.0%	7	6.8%	0	0.0%	25	24.3%	0	0.0%	1	1.0%	0	0.0%	0	0.0%	4	3.9%	21	20.4%	2	1.9%	0	0.0%	0	0.0%	0	0.0%	0	0.0%	0	0.0%	10	9.7%
<i>Northeast Region</i>																																				
	8th	6	0	0.0%	0	0.0%	1	16.7%	3	50.0%	0	0.0%	0	0.0%	0	0.0%	0	0.0%	0	0.0%	1	16.7%	0	0.0%	0	0.0%	0	0.0%	0	0.0%	0	0.0%	0	0.0%	1	16.7%
	13th	3	3	100.0%	0	0.0%	0	0.0%	0	0.0%	0	0.0%	0	0.0%	0	0.0%	0	0.0%	0	0.0%	0	0.0%	0	0.0%	0	0.0%	0	0.0%	0	0.0%	0	0.0%	0	0.0%	0	0.0%
	17th	13	0	0.0%	0	0.0%	0	0.0%	3	23.1%	0	0.0%	0	0.0%	0	0.0%	0	0.0%	0	0.0%	1	7.7%	0	0.0%	0	0.0%	0	0.0%	0	0.0%	0	0.0%	0	0.0%	9	69.2%
	19th	16	3	18.8%	4	25.0%	0	0.0%	0	0.0%	0	0.0%	0	0.0%	0	0.0%	0	0.0%	4	25.0%	5	31.3%	0	0.0%	0	0.0%	0	0.0%	0	0.0%	0	0.0%	0	0.0%	0	0.0%
	20th	7	0	0.0%	0	0.0%	0	0.0%	0	0.0%	0	0.0%	0	0.0%	0	0.0%	0	0.0%	0	0.0%	5	71.4%	0	0.0%	0	0.0%	0	0.0%	0	0.0%	0	0.0%	0	0.0%	2	28.6%
Northeast Total		45	6	13.3%	4	8.9%	1	2.2%	6	13.3%	0	0.0%	0	0.0%	0	0.0%	0	0.0%	4	8.9%	12	26.7%	0	0.0%	0	0.0%	0	0.0%	0	0.0%	0	0.0%	0	0.0%	12	26.7%
<i>Southern Region</i>																																				
	3rd	1	0	0.0%	0	0.0%	0	0.0%	0	0.0%	0	0.0%	0	0.0%	0	0.0%	0	0.0%	0	0.0%	0	0.0%	0	0.0%	0	0.0%	0	0.0%	0	0.0%	0	0.0%	0	0.0%	1	100.0%
	4th	31	5	16.1%	2	6.5%	0	0.0%	5	16.1%	0	0.0%	0	0.0%	0	0.0%	0	0.0%	6	19.4%	10	32.3%	0	0.0%	0	0.0%	0	0.0%	0	0.0%	0	0.0%	0	0.0%	3	9.7%
	10th	12	3	25.0%	0	0.0%	1	8.3%	5	41.7%	0	0.0%	0	0.0%	0	0.0%	0	0.0%	0	0.0%	2	16.7%	0	0.0%	0	0.0%	0	0.0%	0	0.0%	0	0.0%	0	0.0%	1	8.3%
	11th	0	0	0.0%	0	0.0%	0	0.0%	0	0.0%	0	0.0%	0	0.0%	0	0.0%	0	0.0%	0	0.0%	0	0.0%	0	0.0%	0	0.0%	0	0.0%	0	0.0%	0	0.0%	0	0.0%	0	0.0%
	12th	0	0	0.0%	0	0.0%	0	0.0%	0	0.0%	0	0.0%	0	0.0%	0	0.0%	0	0.0%	0	0.0%	0	0.0%	0	0.0%	0	0.0%	0	0.0%	0	0.0%	0	0.0%	0	0.0%	0	0.0%
	15th	1	0	0.0%	0	0.0%	0	0.0%	0	0.0%	0	0.0%	0	0.0%	0	0.0%	0	0.0%	0	0.0%	0	0.0%	0	0.0%	0	0.0%	0	0.0%	0	0.0%	0	0.0%	0	0.0%	1	100.0%
	16th	0	0	0.0%	0	0.0%	0	0.0%	0	0.0%	0	0.0%	0	0.0%	0	0.0%	0	0.0%	0	0.0%	0	0.0%	0	0.0%	0	0.0%	0	0.0%	0	0.0%	0	0.0%	0	0.0%	0	0.0%
Southern Total		45	8	17.8%	2	4.4%	1	2.2%	10	22.2%	0	0.0%	0	0.0%	0	0.0%	0	0.0%	6	13.3%	12	26.7%	0	0.0%	0	0.0%	0	0.0%	0	0.0%	0	0.0%	0	0.0%	6	13.3%
<i>Western Region</i>																																				
	6th	0	0	0.0%	0	0.0%	0	0.0%	0	0.0%	0	0.0%	0	0.0%	0	0.0%	0	0.0%	0	0.0%	0	0.0%	0	0.0%	0	0.0%	0	0.0%	0	0.0%	0	0.0%	0	0.0%	0	0.0%
	7th	1	0	0.0%	0	0.0%	0	0.0%	0	0.0%	0	0.0%	0	0.0%	0	0.0%	0	0.0%	0	0.0%	0	0.0%	0	0.0%	0	0.0%	0	0.0%	0	0.0%	0	0.0%	0	0.0%	1	100.0%
	9th	0	0	0.0%	0	0.0%	0	0.0%	0	0.0%	0	0.0%	0	0.0%	0	0.0%	0	0.0%	0	0.0%	0	0.0%	0	0.0%	0	0.0%	0	0.0%	0	0.0%	0	0.0%	0	0.0%	0	0.0%
	14th	0	0	0.0%	0	0.0%	0	0.0%	0	0.0%	0	0.0%	0	0.0%	0	0.0%	0	0.0%	0	0.0%	0	0.0%	0	0.0%	0	0.0%	0	0.0%	0	0.0%	0	0.0%	0	0.0%	0	0.0%
	21st	23	5	21.7%	0	0.0%	0	0.0%	3	13.0%	0	0.0%	0	0.0%	0	0.0%	0	0.0%	1	4.3%	0	0.0%	0	0.0%	0	0.0%	0	0.0%	0	0.0%	0	0.0%	0	0.0%	14	60.9%
	22nd	1	0	0.0%	0	0.0%	0	0.0%	1	100.0%	0	0.0%	0	0.0%	0	0.0%	0	0.0%	0	0.0%	0	0.0%	0	0.0%	0	0.0%	0	0.0%	0	0.0%	0	0.0%	0	0.0%	0	0.0%
Western Total		25	5	20.0%	0	0.0%	0	0.0%	4	16.0%	0	0.0%	0	0.0%	0	0.0%	0	0.0%	1	4.0%	0	0.0%	0	0.0%	0	0.0%	0	0.0%	0	0.0%	0	0.0%	15	60.0%		
Other Total		0	0	0.0%	0	0.0%	0	0.0%	0	0.0%	0	0.0%	0	0.0%	0	0.0%	0	0.0%	0	0.0%	0	0.0%	0	0.0%	0	0.0%	0	0.0%	0	0.0%	0	0.0%	0	0.0%		
Individual RD Totals		218	52	23.9%	13	6.0%	2	0.9%	45	20.6%	0	0.0%	1	0.5%	0	0.0%	0	0.0%	15	6.9%	45	20.6%	2	0.9%	0	0.0%	0	0.0%	0	0.0%	0	0.0%	0	0.0%	43	19.7%
Statewide Totals		218	65	29.8%	13	6.0%	2	0.9%	45	20.6%	0	0.0%	1	0.5%	0	0.0%	0	0.0%	15	6.9%	45	20.6%	2	0.9%	0	0.0%	0	0.0%	0	0.0%	0	0.0%	43	19.7%		

Central Region

CYDC Reason Detained by Judicial District July 2022 New Admits



■ CENTRAL REGION, 103 New Admits

■ 1st JD, 25 New Admits

■ 5th JD, 2 New Admits

■ 2nd JD, 35 New Admits

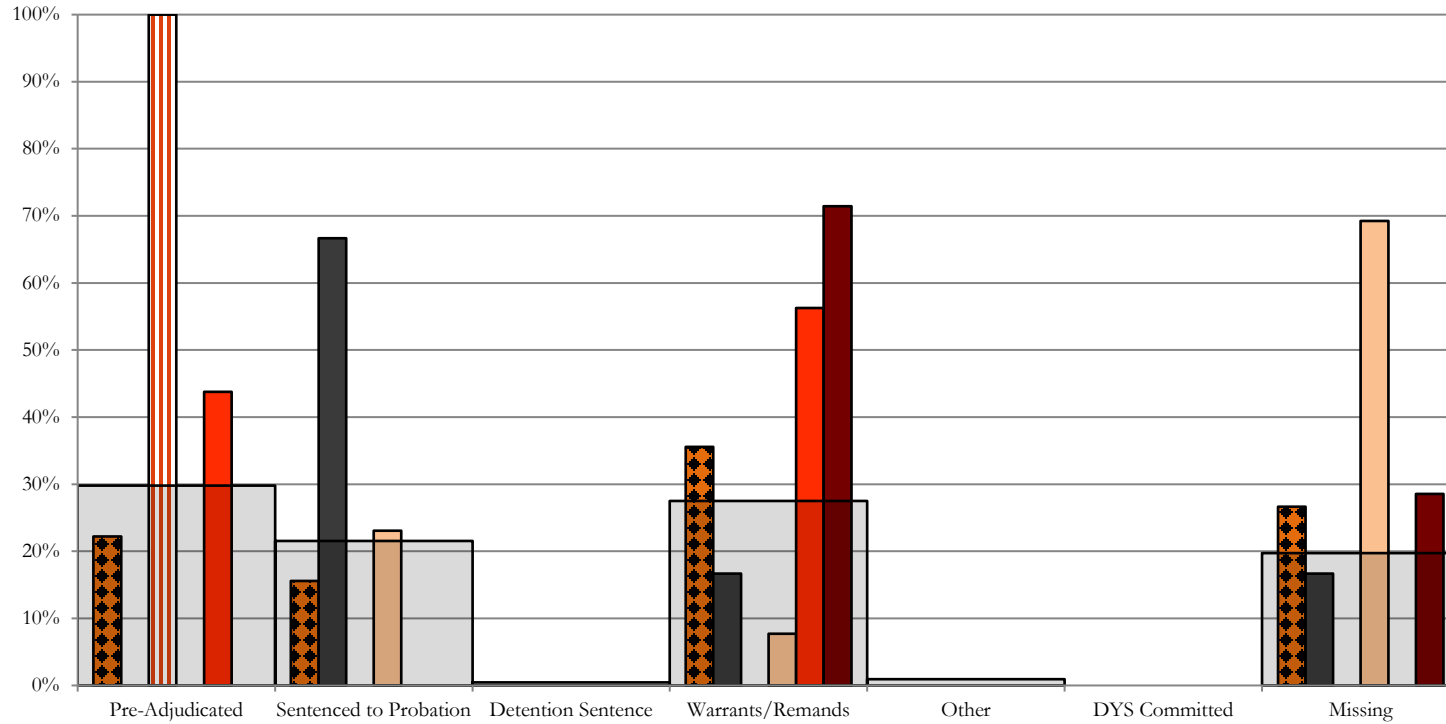
■ 18th JD, 41 New Admits

■ STATEWIDE, 218 New Admits

Northeast Region

CYDC Reason Detained by Judicial District

July 2022 New Admits



■ NORTHEAST REGION, 45 New Admits

■ 13th JD, 3 New Admits

■ 19th JD, 16 New Admits

■ STATEWIDE, 218 New Admits

■ 8th JD, 6 New Admits

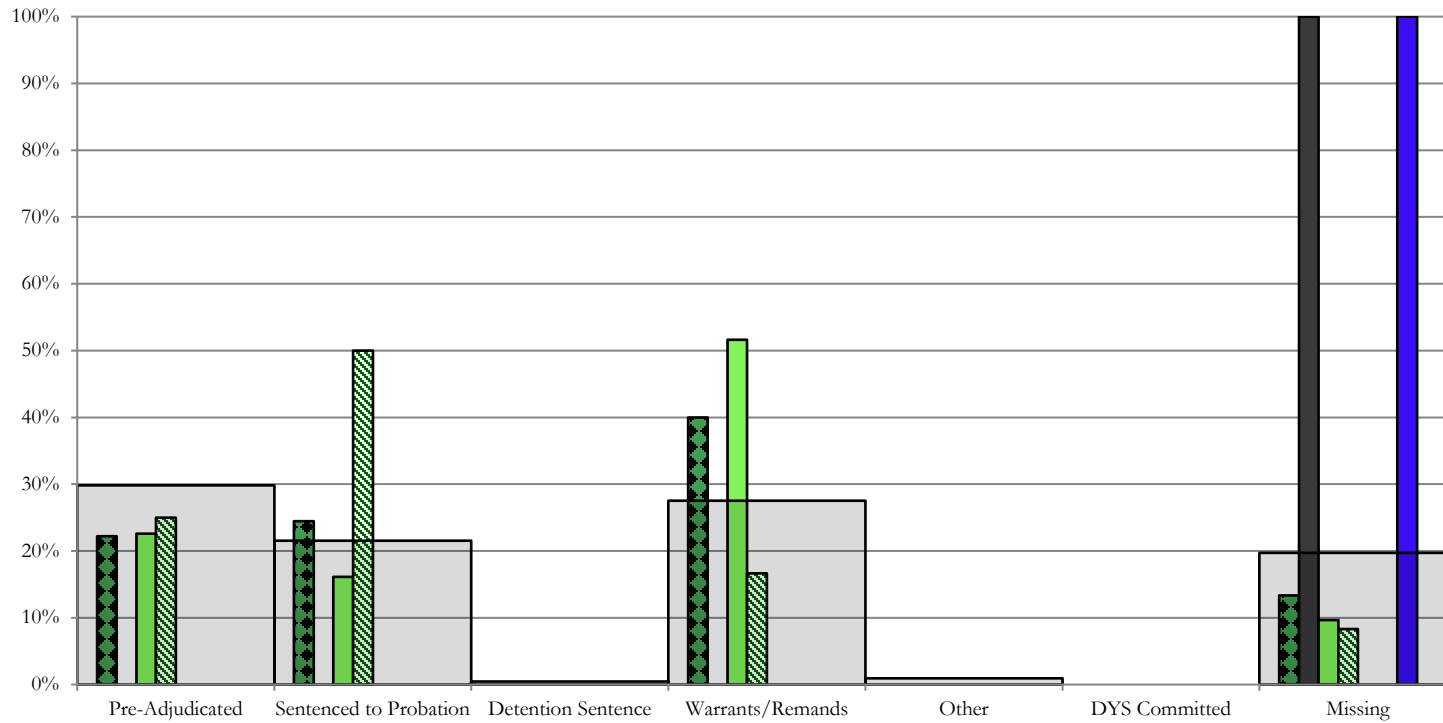
■ 17th JD, 13 New Admits

■ 20th JD, 7 New Admits

Southern Region

CYDC Reason Detained by Judicial District

July 2022 New Admits



■ SOUTHERN REGION, 45 New Admits

■ 4th JD, 31 New Admits

■ 11th JD, 0 New Admits

■ 15th JD, 1 New Admits

■ STATEWIDE, 218 New Admits

■ 3rd JD, 1 New Admits

■ 10th JD, 12 New Admits

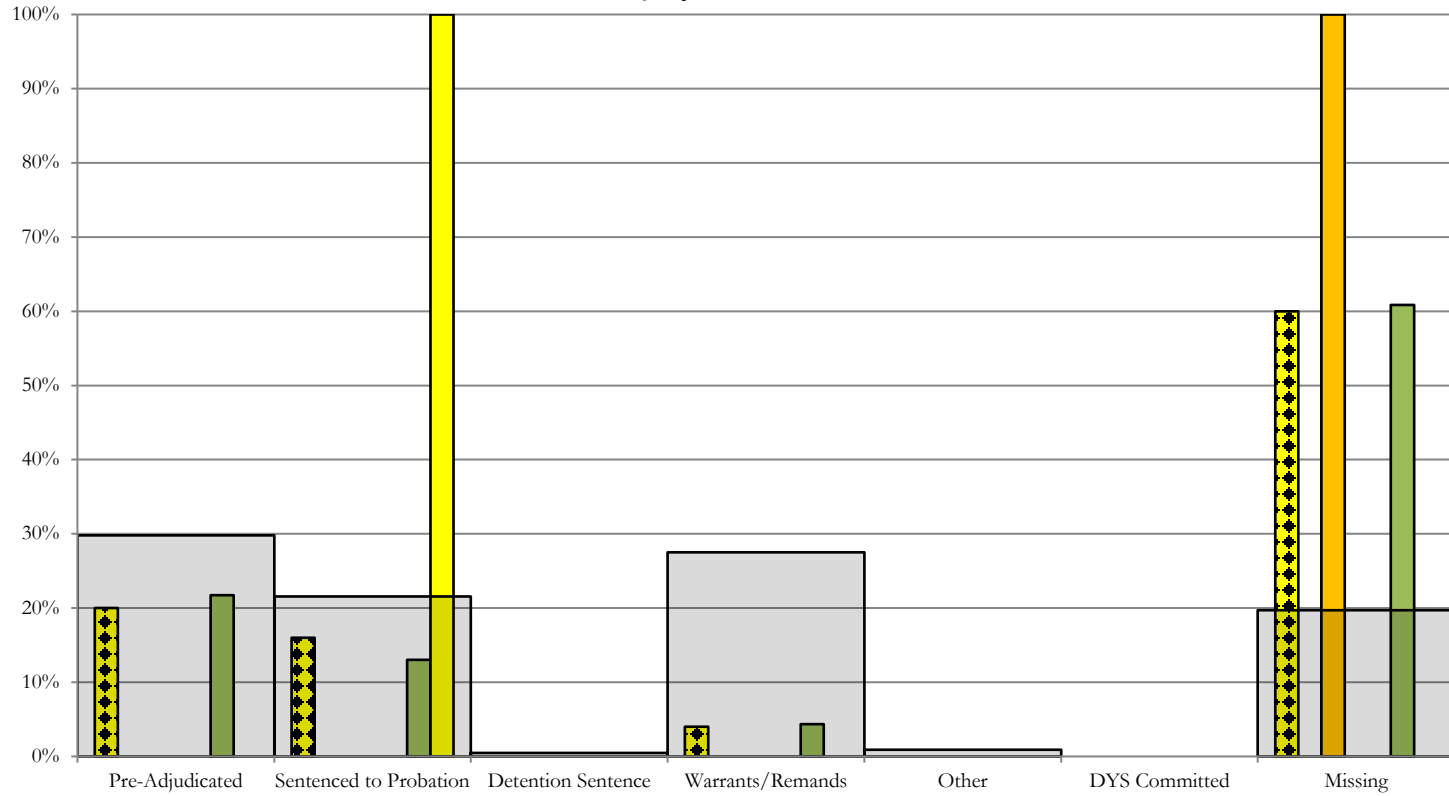
■ 12th JD, 0 New Admits

■ 16th JD, 0 New Admits

Western Region

CYDC Reason Detained by Judicial District

July 2022 New Admits



- WESTERN REGION, 25 New Admits
- 7th JD, 1 New Admits
- 14th JD, 0 New Admits
- 22nd JD, 1 New Admits
- 6th JD, 0 New Admits
- 9th JD, 0 New Admits
- 21st JD, 23 New Admits
- STATEWIDE, 218 New Admits

July 2022 CYDC Supplemental Report

DYS Detention Maximum Youth Served by Judicial District ¹

Region	JD	Detention Capacity	Detention ADP		Maximum Youth Served on a Single Day ^{2,3}			
			July 2022	YTD	July 2022		YTD	
					Number of Youth	% of Detention Capacity	Number of Youth	% of Detention Capacity
<i>Central Region</i>								
	1st	20	10.2	10.2	13	65.0%	13	65.0%
	2nd	35	26.8	26.8	35	100.0%	35	100.0%
	5th	2	0.4	0.4	2	100.0%	2	100.0%
	18th	37	33.5	33.5	37	100.0%	37	100.0%
Central Region		94	70.9	70.9	78	83.0%	78	83.0%
<i>Northeast Region</i>								
	8th	11	4.4	4.4	6	54.5%	6	54.5%
	13th	2	4.2	4.2	6	300.0%	6	300.0%
	17th	17	15.7	15.7	18	105.9%	18	105.9%
	19th	15	5.3	5.3	10	66.7%	10	66.7%
	20th	10	2.6	2.6	5	50.0%	5	50.0%
Northeast Region		55	32.2	32.2	39	70.9%	39	70.9%
<i>Southern Region</i>								
	3rd	2	0.5	0.5	2	100.0%	2	100.0%
	4th	27	34.0	34.0	36	133.3%	36	133.3%
	10th	10	6.5	6.5	10	100.0%	10	100.0%
	11th	2	0.0	0.0	0	0.0%	0	0.0%
	12th	2	0.0	0.0	0	0.0%	0	0.0%
	15th	2	0.1	0.1	1	50.0%	1	50.0%
	16th	2	0.0	0.0	0	0.0%	0	0.0%
Southern Region		47	41.2	41.2	46	97.9%	46	97.9%
<i>Western Region</i>								
	6th	2	0.0	0.0	0	0.0%	0	0.0%
	7th	3	3.1	3.1	4	133.3%	4	133.3%
	9th	2	1.0	1.0	1	50.0%	1	50.0%
	14th	2	0.0	0.0	0	0.0%	0	0.0%
	21st	8	9.7	9.7	15	187.5%	15	187.5%
	22nd	2	0.02	0.02	1	50.0%	1	50.0%
Western Region		19	13.9	13.9	19	100.0%	19	100.0%
<i>Missing JD or Multiple JDs</i>			0.4	0.4				
Statewide		215	158.7	158.7	174	80.9%	174	80.9%

¹ Maximum youth served is the highest number of youth in detention on a single day during the month or fiscal year.

² Regional figures are not the sum of judicial districts, but represent the maximum count on one day for the entire region.

³ State figures are not the sum of regional figures, but represent the maximum count on one day for the entire state.