

THRIVING CHILDREN

OBJECTIVE 1: Children live in safe communities with comprehensive supports embedded and accessible to families in the neighborhoods in which they live.

OBJECTIVE 2: Children are healthy and have opportunities for positive holistic development, nutrition, and wellness.

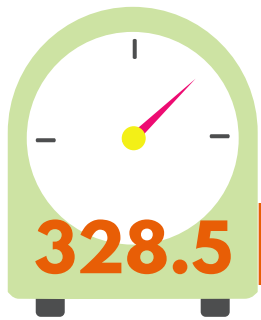
OBJECTIVE 3: All children are learning and developing and equipped with school readiness skills.

OBJECTIVE 4: Children are engaged in quality interactions.

GOAL 2

All children have the resources, supports, and interactions early in life to thrive in school and life.

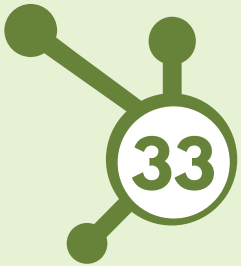
EARLY CHILDHOOD MENTAL HEALTH SUPPORTS



A total of **328.5 hours** of direct Early Childhood Mental Health (ECMH) consultation were provided to:

6

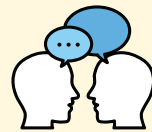
ECE programs receiving embedded ECMH Services.



An **El Paso County ECMH Collaborative** was created and meets quarterly to ensure a system of support.

Thirty-three individuals, representing 22 organizations, came together to discuss ECMH efforts in our community.

OUTREACH



Increased our reach

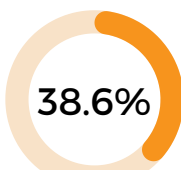
into the Spanish-speaking Family, Friend + Neighbor (FFN) caregiver population by hiring a bilingual **FFN Specialist** to join JI's Foundations team.

422

ECE PROGRAMS IN EL PASO COUNTY

39

PROGRAMS ACHIEVED A LEVEL 2 RATING



% OF PROGRAMS RATED LEVEL 2-5



76

LEVEL 2



15

LEVEL 3



68

LEVEL 4



4

LEVEL 5



El Paso County reported an **increase of 573 spots** at ECE programs over the past year.