



## EXPANSION

JI was determined the **Local Coordinating Organization (LCO) for EL Paso County**. This award will begin with the task of writing the LCO community plan, due October 1st, 2022. JI, along with the LCO Advisory Committee has developed a robust set of planning meetings and feedback sessions aimed at the inclusion of families, teachers, administrators, and other key stakeholders. A total of 2FTE were funded to begin this work and JI will post and hire upon receipt of this new contract.

## PARTNERSHIPS

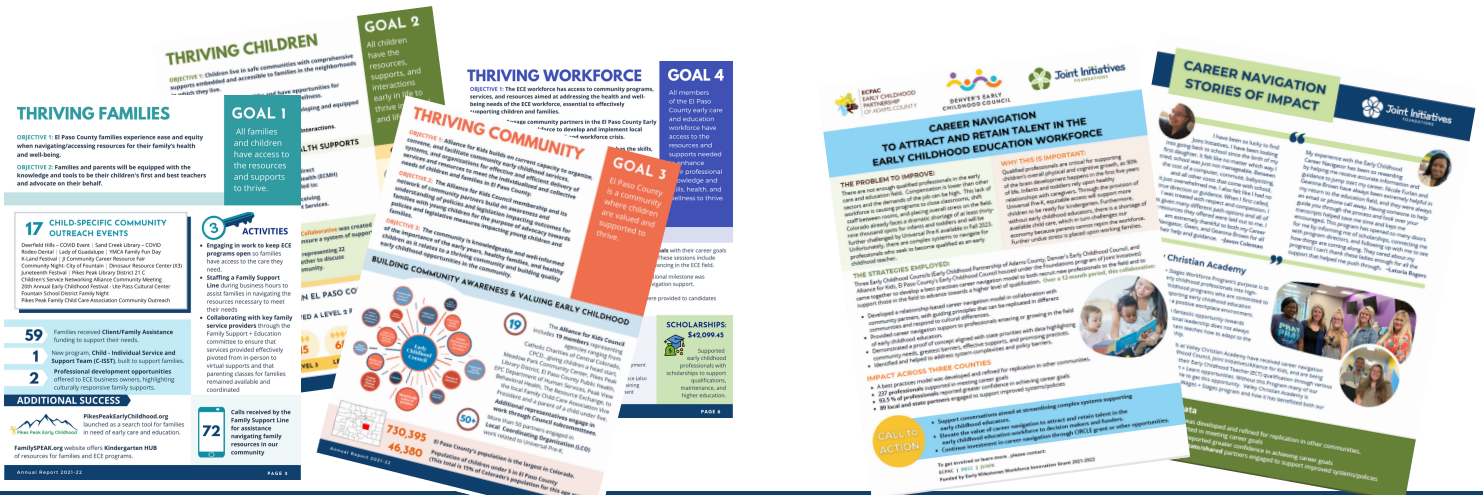
Hearing the need for professional development opportunities that focus on early language and literacy, music, and creativity, JI is **expanding partnership with Linda Weise and the Community Cultural Collective**. This partnership is aimed at engaging teachers and teacher's assistants in training and opportunities that increase early language and literacy through exposure to teacher skill development in the areas of music, group facilitation, and creativity.

## CAPACITY BUILDING

JI received **two CIRCLE grants** to expand early childhood workforce supports. The first CIRCLE grant will provide ongoing funding for career navigation and the development of a toolkit for state-wide scaling. The second CIRCLE grant, ECE Boost, will fund the implementation of retention strategies, further partnership building with school districts to create pathways into the field of early childhood, and will allow for the development of community-wide workforce tracking measures.

## ADDITIONAL HIGHLIGHTS

- The JI coaching team is adding the option of **coaching cohorts** to the menu of program supports for the new fiscal year. Cohorts include expansion of infant/toddler capacity; early language and literacy; Center-based Preparation for Colorado Shines Rating; and Family Child Care Preparation for Colorado Shines Rating.
- A total of **22** programs signed an MOU to engage in quality improvement efforts in the month of July.
- Alliance for Kids FY2021-22 Annual Report** and **Career Navigation Highlights Report**
- FY2021-22 ECE Data Trends Report**





## EXPANSION

**More FTE growth!** The REACH Committee recently approved the funding of an **additional Care Coordinator position** to support the district's Truancy Court program and their desire for more intensive case follow up in order to ensure that the family needs identified in the T-ISST process are met and that follow through has occurred.

## CAPACITY BUILDING

The 4th Judicial District will submit a plan by September 1st to pilot **Shelter Care programming** for youth that screen through our Juvenile Detention Screening and Assessment Guide (JDSAG). Our district has an allocation of \$18,406 to plan, administer, and purchase shelter care. Initial estimates project a three-month planning process with capacity to serve five to ten qualifying youth.

## PARTNERSHIPS

We are excited to announce that our Pathways team has gone on **10 site visits**. These visits were **to our community partners and service providers** that engage to create systems of care, positive changes, and improved communication for the benefit of youth and families in the 4th Judicial District. Available staff took baskets of goodies, and thank you cards "on the road." We estimate there are 10 to 15 more sites to go and recognize the incredible privilege it is work alongside each individual and the organization they represent.

## ADDITIONAL HIGHLIGHTS

- Pathways has a **Planning Team** and a **Care Team** that serve youth ages 0-21.
- Pathways Planning Team for fiscal year FY2021-22 served:
  - **87 E-ISST** (Expedited)
  - **31 ISST** (All others 0-21)
  - **8 C-ISST** (Children 0-10)
- The Pathways Care Team for FY21-22 served:
  - **80 youth** (10-17 ) with Care Coordination
- The expansion of our Pathways Care Team will include **one additional Pathways Care Coordinator** beginning in mid to late September.