



## EXPANSION

**Early Milestone's CIRCLE grant** first and second round applications have been completed. These grants **offer nearly \$23 million in ARPA funding for child care providers** and other community, education, and governmental partners to develop innovative solutions to child care challenges that were worsened by the pandemic. **Grantee award announcements will be made by June 17, 2022!**

## PARTNERSHIPS

Jl recognizes the importance of including more **school membership and representation in El Paso County's early childhood systems-building work**, and has begun to strategize with Alliance for Kids Council members and UPK stakeholders to create an inclusive or balanced structure that ensures all essential "voices" are included in critical decision-making processes moving forward.

## CAPACITY BUILDING

With the continued support of the **Legacy Institute** and their funding of a neutral facilitator, this region's **Universal Pre-Kindergarten (UPK) implementation is on track with Joint Initiatives selected as the applicant agency for the Local Coordinating Organization (LCO)**. In this coordinating role, JI has organized two community meetings to solicit feedback from school districts and other stakeholders to draft and submit the LCO application by the June 20, 2022, deadline. Next steps in the process include participating in an interview with the state's NEW Department of Early Childhood representative(s); drafting of an agency budget; convening of a planning committee; and possibly designing a regional structure for UPK implementation.

## ADDITIONAL HIGHLIGHTS

- **EPC Early Childhood Education Program Data Trends Report | March 2021 - APRIL 2022**
- **Emerging & Expanding (E&E) Grant Opportunity:** El Paso County has **\$1.2M** in applications under review with **19** sites already funded for a total amount of **\$750,012** and **1** additional site in the application process.
- **Coaching** has been provided to **87** licensed early childhood programs, and a cohort of **35** Family, Friend + Neighbor (FFN) providers has been built (not coached).
- With the return of **Early Childhood Mental Health (ECMH)** practitioners to early childhood classrooms, JI continues to engage with **5** early childhood sites (**11** classrooms), impacting an estimated **121** young children in our community.
- Through a partnership with **Early Connections Learning Centers**, Foundations continues to enroll and expand Family Child Care Homes (FCCHs) across the Pikes Peak region, with **199 FCCHs** supported to date.
- JI's **two Career Navigators** have assisted **85 professionals** with their career goals, with **34** engaging in multiple sessions, for a total of **1,556 hours of career navigation** provided. These sessions include individualized support and helping to remove barriers to advancing in the ECE field. Implementing career navigation in the community is the result of collaborative efforts, including **88 meetings** with various partners.



## EXPANSION

**More FTE growth!** The REACH Committee recently approved the funding of an **additional Care Coordinator position** to support the district's Truancy Court program and their desire for more intensive case follow up in order to ensure that the family needs identified in the T-ISST process are met and that follow through has occurred.

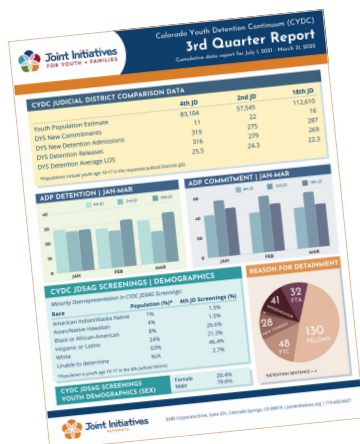
## CAPACITY BUILDING

**HB 22-1056 "Emergency Temporary Care for Children"** has been signed into law by the governor with the goal of establishing local shelter beds options for pre- and post-adjudicated youth. This law includes a fiscal note and proposes the utilization of current CYDC funding for this purpose. REACH's Executive Committee has been monitoring the legislation, has discussed local impact/challenges, and is tasked with drafting a district-wide implementation plan. The anticipated implementation deadline is slated for July 1, 2022. Included in this discussion is a potential partnership with Savio House out of Denver to initiate a capital campaign and raise funds for either the purchase of or to build a Juvenile Assessment Center for the 4th Judicial District.

## PARTNERSHIPS

It's MOU season for HB1451 Collaborative Management Program (CMP)! The REACH Committee, it's members, partners and Pathways Staff have been hard at work drafting the MOU language, goals and outcomes, and a final budget for the upcoming 2022-23 fiscal year. Critical to these efforts is **HB22-1329**, an amendment to the Colorado Legislature's Long Bill, that includes **\$2 million additional** dollars for the CMP allocation fund. **A FINAL VERSION of El Paso County's MOU was submitted to the State on Friday, June 10th.**

## ADDITIONAL HIGHLIGHTS



- To date, **MTR numbers have gradually increased** with **39** current open cases (**81** total cases for the fiscal year). This increase is a direct result of students returning to school and increased usage of illegal substances and mental health struggles in the youth population.
- This fiscal year, **126** youth and families have utilized Pathways' **Individualized Service and Support Team (ISST)** process to address placement stability, need complexity, and the overcoming of barriers to services. This total represents **31 ISST, 87 Expedited-ISST, and 8 Child-ISST.**
- Jl's **FY21-22 CYDC/MTR Data Report – 3rd Quarter**
- Jl has added nine (**9**) **new service providers** this fiscal year.
- As part of our partner recruitment, there have been **five (5)** visits with service providers to present **High Fidelity Wraparound (HFW)**, and all new service providers are being offered the opportunity to receive free HFW training.



## CAPACITY BUILDING

With summer quickly approaching, JI and the **Voices** program is creating safe places to play with the purpose of engaging youth and families in soccer kickarounds; this is in partnership with the **Southeast Springs Soccer Initiative (SeSSI)**, **Pride Soccer Club**, **Colorado College** and **Concrete Couch**.

## EXPANSION

On June 27, 2022, JI and the **Voices** program will welcome a new **Restorative Justice (RJ) Coordinator** position to introduce, engage, and facilitate RJ practices both internally and across the Pikes Peak Region. This is a dream come true for JI staff, leadership and our community partners. More to come on RJ development and implementation strategies!

## PARTNERSHIPS

There is no partnership update this month.

## ADDITIONAL HIGHLIGHTS

- A total of **59 families** have been supported through **Client/Family Assistance** funding this fiscal year.
- Over this past fiscal year, youth and parent advocates participated in **126 ISST meetings (31 ISST, 87 E-ISST, and 8 C-ISST)** for the purpose of being a relatable support network for our youth and families in order to address their unique needs, establish linkages to appropriate services, and offer guidance navigating our complex systems.
- The AFK Council's **Family Support + Education Subcommittee** has created a **Community Family Calendar** on the Joint Initiatives website. Parent training calendars and resources can be easily accessed and shared, and organizations have the ability to submit events and classes to be posted on the calendar. Currently, **3 events** can be found on this calendar. These include two summer camps and Palome classes which include Art Therapy, Teen Survival Skills, Trauma-Informed Parenting/All About Being a Teen, and Home Base Support & Recovery.

