



CAPACITY BUILDING

Proposed legislation **HB 22-1056 “Emergency Temporary Care for Children”** has been drafted to establish local shelter beds options for pre- and post-adjudicated youth. This bill currently includes a fiscal note and proposes the utilization of current CYDC funding for this purpose. REACH’s Executive Committee will monitor the legislation and assist with creating the local plan with an anticipated implementation date of July 1, 2022. REACH’s Executive Subcommittee has agreed to track the legislation, discuss local impact/challenges, and draft a district-wide implementation plan for this purpose.

EXPANSION

Jl recently hired a **Partner Recruiter** who is tasked with expanding High-Fidelity Wraparound services across the Pikes Peak Region. This position will work to expand the number of available wraparound agencies, work collaboratively to certify wraparound facilitators, and expand the availability of wraparound slots across our community.

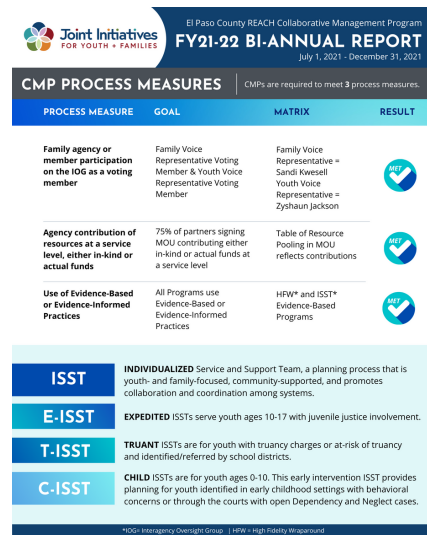
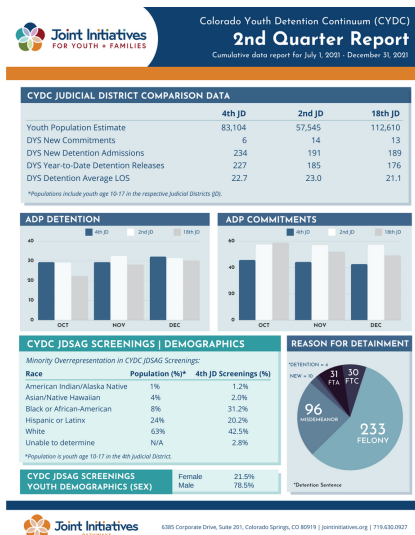
PARTNERSHIPS

Jl will partner with **Mission Possible** to explore local, state and federal grant opportunities around the expansion and long-term sustainability of the Parent Partner Program (PPP) for system-involved youth that has been piloted in the community over the past few years.

ADDITIONAL HIGHLIGHTS

- To date, **MTR numbers have gradually increased** with **54** current cases (**72** total cases for the year). This increase is a direct result of students returning to school and increased usage of illegal substances and mental health struggles in the youth population.
- To date, **96** youth and families have utilized the Pathways’ **Individualized Service and Support Team (ISST)** process to address placement stability, need complexity, and the overcoming of barriers to services.

- Jl’s **FY21-22 CYDC/MTR Data Report – 2nd Quarter**
- Jl’s **NEW FY21-22 CMP Data Report – Bi-Annual**





EXPANSION

Jl/AFK Council recently learned that El Paso County's Department of Human Services agreed to fully fund the cost the **Bridgecare Project** through a current contract. The project offers an internet platform for parents of young children to access "real-time" data about early child care slot availability and openings across the county. Jl recently hired a **NEW Data Support Specialist** to assist with the implementation of this project with additional Child Care Resource & Referral (CCR&R) State funds.

PARTNERSHIPS

Through visionary board leadership, Jl has recently partnered with the **University of Colorado at Colorado Springs (UCCS)** to pursue a non-competitive State grant opportunity for early childhood career navigation, educational scholarship opportunities, and workforce expansion and stability. Jl will participate in a subrecipient capacity.

CAPACITY BUILDING

Colorado's **NEW** cabinet-level **Department of Early Childhood** and universal preschool has been, and will continue to be, a huge change in the systems that surround our children and families. The next collective step in this journey is translating the *unanimously approved* **Transition** and **Universal Preschool (UPK)** recommendations into legislation. The Governor and Colorado's the Office of State Planning and Budget are well on their way on the administrative and budgetary side with several budget requests pending before the Joint Budget Committee that were built in response to these recommendations. UPK implementation will take effect July 1, 2023, with members of the Alliance for Kids (AFK) Council engaging in local UPK conversation, strategy and planning efforts. The Legacy Institute has agreed to serve as the neutral facilitator of this critical dialogue which will occur during the months of March and April 2022.

ADDITIONAL HIGHLIGHTS

- **Emerging & Expanding (E&E) Grant Opportunity:** El Paso County has **\$1.2M** in applications under review with **6** sites already funded for a total amount of **\$227,322** and additional sites in the application process.
- Coaching has been provided to **59** licensed early childhood programs and **41** Family, Friend + Neighbor (FFN) providers.
- With the return of **Early Childhood Mental Health (ECMH)** practitioners to early childhood classrooms, Jl will continue to engage with **6** sites, with an estimated impact to **600** young children in our community.
- Through a partnership with **Early Connections Learning Centers (ECLC)**, Foundations continues to enhance the network of support for Family Child Care Homes (FCCHs) through the implementation of **Family Child Care Navigation**. These **services are open to all 196 FCCHs**, and areas of support will include accessing health care; Diversity, Equity, and Inclusion resources; and connecting with additional programming such as the Child and Adult Care Food Program (CACFP).



Revised logo coming soon!

NEW PROGRAM NAME: VOICES

CAPACITY BUILDING

With spring and summer quickly approaching, the **Voices** program is creating safe places to play with the purpose of engaging youth and families in soccer kickarounds; this is in partnership with the **Southeast Springs Soccer Initiative (SeSSI)**, **Pride Soccer Club**, **Colorado College** and **Concrete Couch**.

EXPANSION

Jl is pursuing grant funding for a **Father Advocate** position to support fathers involved the early childhood, dependency/neglect and juvenile justice systems. This advocate would participate in the creation and implementation of district-wide Father Circle Support Groups and community outreach events.

PARTNERSHIPS

Jl recently partnered with two **University of Colorado at Colorado Springs (UCCS)** professors to facilitate an equity learning opportunity. The content was well-received by participants and led to increased learnings about equity and intersectionality.

ADDITIONAL HIGHLIGHTS

- The **AFK Council's Family Support + Education Subcommittee** is working on an online **Community Family Calendar** on the newly launched **Joint Initiatives website**. Parent training calendars and resources can be easily accessed and shared, and organizations have the ability to submit events and classes to be posted on the calendar.
- Jl's **Racial Equity Action Plan (REAP)** began the process of addressing internal equity/conflict resolution with the completion of 7 staff connection groups (three CORE Panel and four all staff).
- A total of **30** families have been supported through **Family Assistance** funding year to date.
- Jl **Racial Equity Learning Series, Part 4: Minimizing Implicit Bias + Stereotype Threat** (3/18/22). Click [HERE](#) for details and to register.

